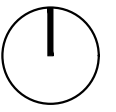


**P.U.Z.** PLAN URBANISTIC ZONAL  
 CONSTRUIRE CASE SI DOTARI COMPLEMENTARE  
 IN COMUNA BOD, DE692 F.N.  
 PLAN RACORDARE LA DJ103 sc. 1:5000



Legenda :  
 Acces la DJ103



SCHMIDT  
 ARCHITECTURE STUDIO

CUI 36454911, J8/1750/2016  
 B-dul Muncii nr. 13, ap. 1, Brasov  
 tel. 0749855945, 0766413990, e-mail: contact@arhbv.ro

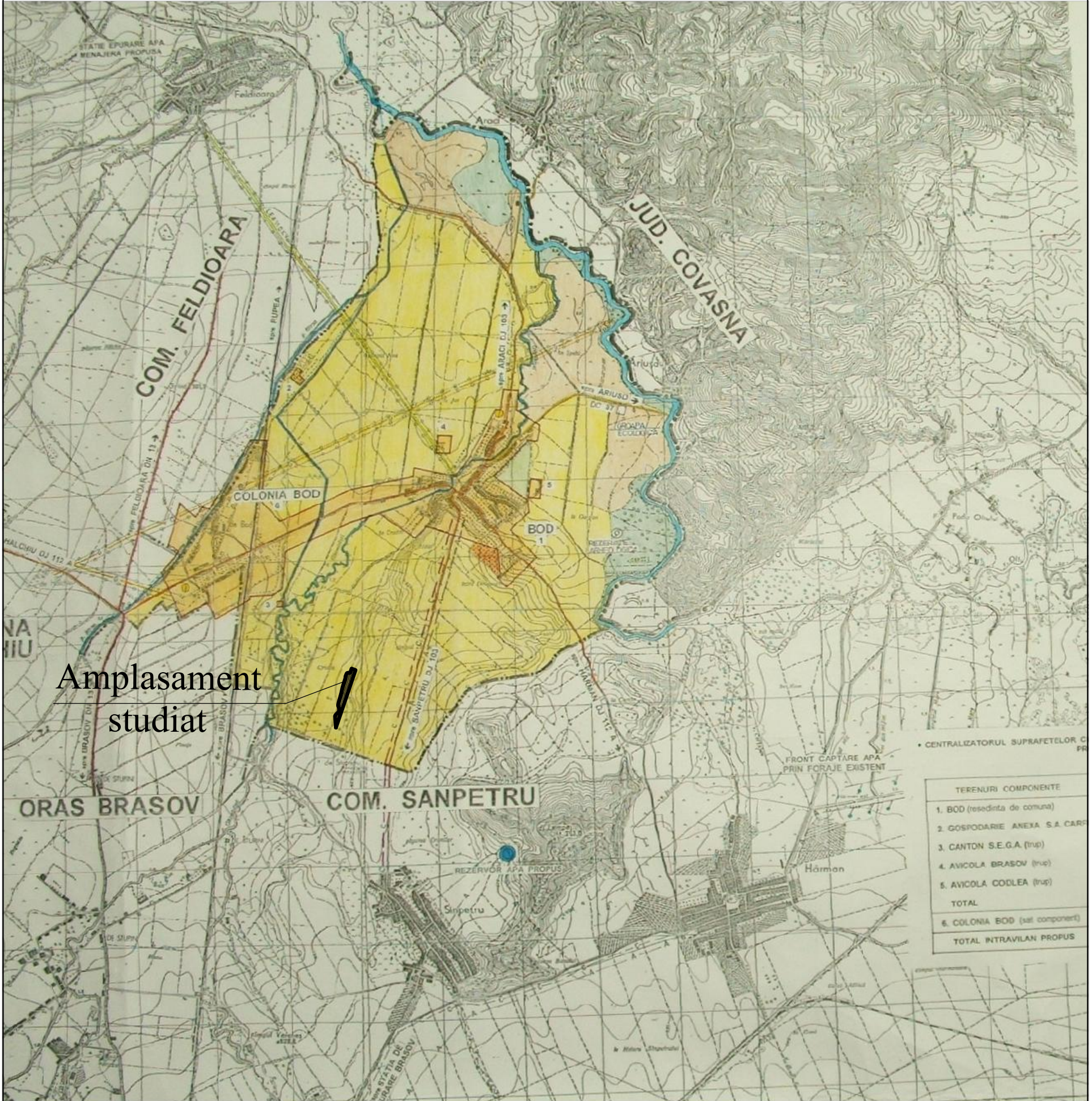
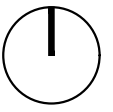
Beneficiar:	U.A.T. Comuna Bod	<b>KLT1</b>
Initiator:	Kovacs Lucian-Tiberius	
Investitie:	P.U.Z. - Construire case si dotari complementare	
Amplasament:	Jud. Brasov, com. Bod, DE692 fn	

SEF PROIECT	Arh. Fintina E.	DATA: 04.2016
PROIECTAT	Arh. Veteleanu A.	<b>SCARA</b> <b>1:5000</b>
DESENAT	Arh. Veteleanu A.	

PLAN RACORDARE LA DJ103

Planşa nr.  
**U02**

**P.U.Z.** PLAN URBANISTIC ZONAL  
 CONSTRUIRE CASE SI DOTARI COMPLEMENTARE  
 IN COMUNA BOD, DE692 F.N.  
 PLAN DE INCADRARE IN P.U.G. sc. 1:50000



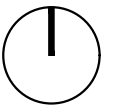
<p>SCHMIDT ARCHITECTURE STUDIO</p> <p>CUJ 36454911, 18/1750/2016 B-dul Muncii nr. 13, ap. 1, Brasov tel. 0749855945, 0766413990, e-mail: contact@arhbv.ro</p>	Beneficiar:	U.A.T. Comuna Bod	<b>KLTI</b>  FAZA PUZ  Planşa nr. <b>U00</b>
	Initiator:	Kovacs Lucian-Tiberius	
	Investitie:	P.U.Z. - Construire case si dotari complementare	
	Amplasament:	Jud. Brasov, com. Bod, DE692 fn	
SEF PROIECT	Arh. Fintina E.	DATA: 04.2016	PLAN DE INCADRARE IN P.U.G.
PROIECTAT	Arh. Veteleanu A.	<b>SCARA</b> <b>1:50000</b>	
DESENAT	Arh. Veteleanu A.		


# P.U.Z. PLAN URBANISTIC ZONAL

## CONSTRUIRE CASE SI DOTARI COMPLEMENTARE

### IN COMUNA BOD, DE692 F.N.

#### PLAN DE INCADRARE IN ZONA sc. 1:20000



 <b>SCHMIDT ARCHITECTURE STUDIO</b> <small>CUI 36454911, J8/1750/2016          B-dul Muncii nr. 13, ap. 1, Brasov          tel. 0749855945, 0766413990, e-mail: contact@arhvb.ro</small>	Beneficiar:	U.A.T. Comuna Bod	KLT1
	Initiator:	Kovacs Lucian-Tiberius	
	Investitie:	P.U.Z. - Construire case si dotari complementare	FAZA PUZ
	Amplasament:	Jud. Brasov, com. Bod, DE692 fn	
SEF PROIECT	Arh. Fintina E.	DATA: 04.2016	PLAN DE INCADRARE IN ZONA
PROIECTAT	Arh. Veteleanu A.	SCARA 1:20000	
DESENAT	Arh. Veteleanu A.		
			Plansa nr. U0

P.U.Z. PLAN URBANISTIC ZONAL  
 CONSTRUIRE CASE SI DOTARI COMPLEMENTARE  
 IN COMUNA BOD, DEE92 F.N.  
 PLAN SITUATIA EXISTENTA sc. 1:1000



№	Suprafata	Tip	Valoare
1	102843	SA	102843
2	102843	SA	102843
3	102843	SA	102843
4	102843	SA	102843
5	102843	SA	102843
6	102843	SA	102843
7	102843	SA	102843
8	102843	SA	102843
9	102843	SA	102843
10	102843	SA	102843
11	102843	SA	102843

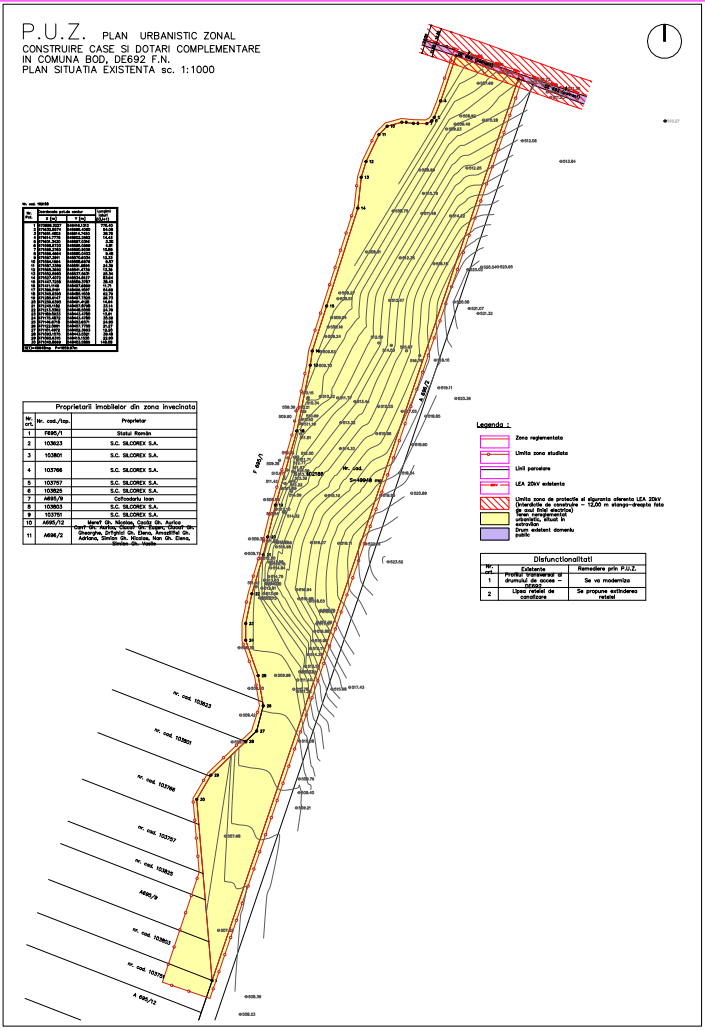
№	Titlu	Proprietar
1	102843	S.C. SALONEX S.A.
2	102843	S.C. SALONEX S.A.
3	102843	S.C. SALONEX S.A.
4	102843	S.C. SALONEX S.A.
5	102843	S.C. SALONEX S.A.
6	102843	S.C. SALONEX S.A.
7	102843	S.C. SALONEX S.A.
8	102843	S.C. SALONEX S.A.
9	102843	S.C. SALONEX S.A.
10	102843	S.C. SALONEX S.A.
11	102843	S.C. SALONEX S.A.

**Legenda 1.**

- Zona reglementata
- Cautii si zone studiate
- Loturi parcare
- SA 100% cablata
- Zona zona de protectie si dispozitie tehnica LEA 10KV
- Zona de protectie si dispozitie tehnica LEA 10KV
- Zone rezervoare alimentare
- Zone rezervoare alimentare

**Disfunctionalitati**

№	Existenta	Remediere prin P.U.Z.
1	Disfunctionalitate	Se nu remedieaza
2	Disfunctionalitate	Se propune ameliorarea



A1- 594x841 SC.1/1000