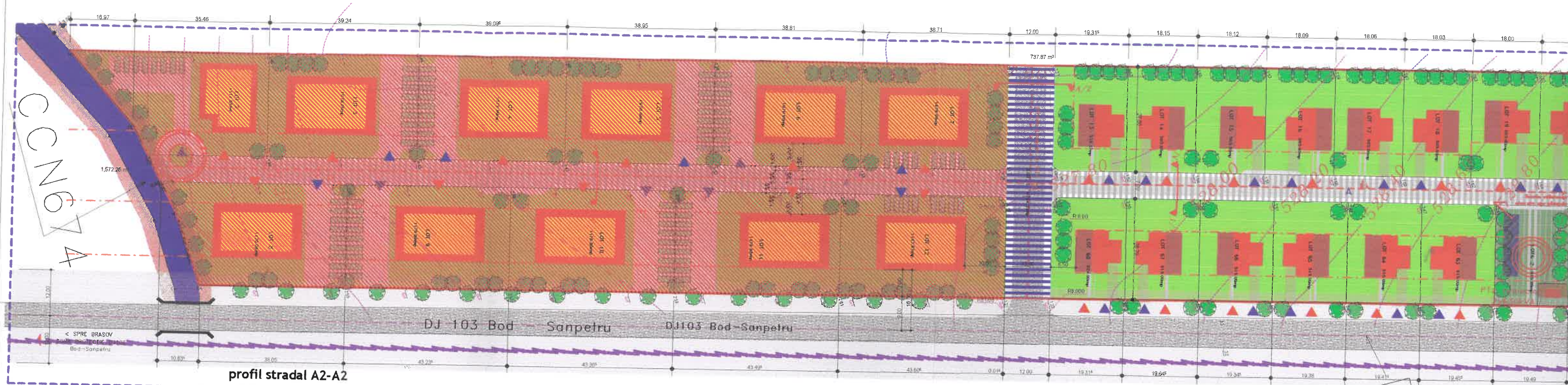
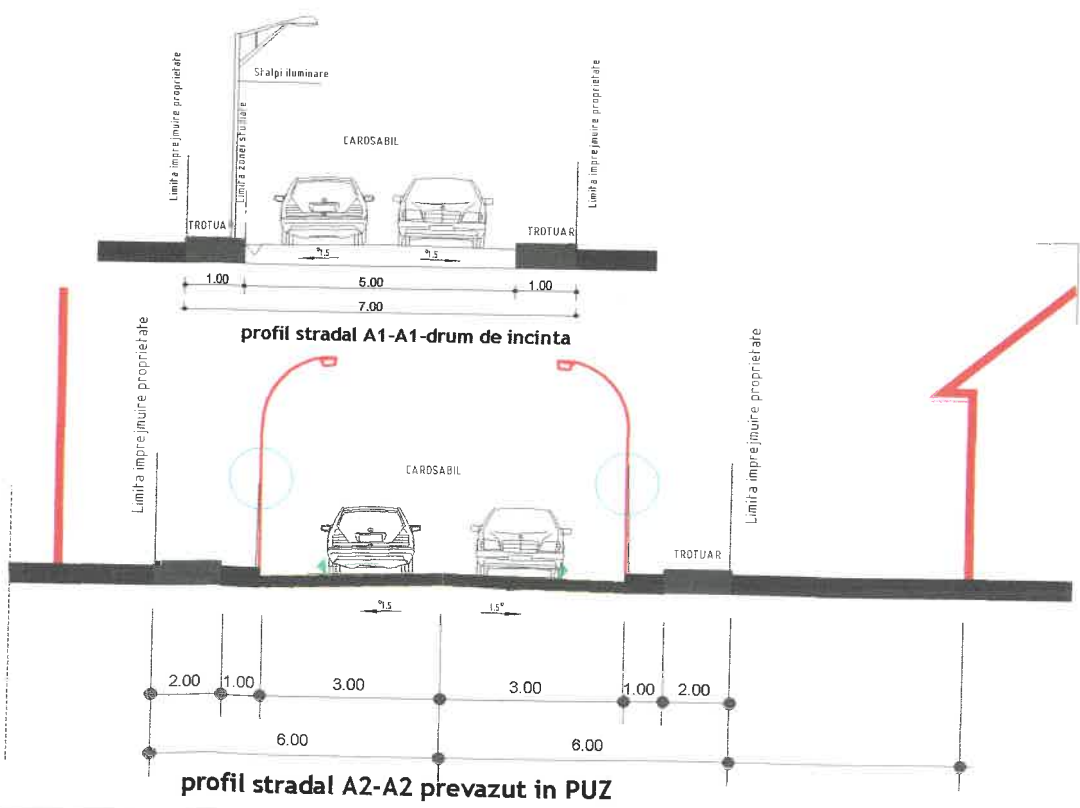


NR. CAD.
NR. TOP



LEGENDA

- LIMITA ZONEI STUDIATE
- LIMITA PROPRIETATE
- AXUL DRUMULUI
- ALINIERE PROPUSE
- ZONA VERDE AMENAJATA
- LOCUINTE COLECTIVE PROPUSE SI DOTARI DE CARTIER S+P+2E+M
- LOCUINTE PROPUSE INDIVIDUALE S+ P+1E+M
- PIETONAL
- PLATFORMA MENAJERA
- CAROSABIL- DJ
- INTERDICTIE DE CONSTRUIRE 12 m DIN AXUL DRUMULUI JUDETEAN DJ 103
- ZONA PROTECTIE CANAL - 3m STANGA, DREAPTA DE -A LUNGUL CANALULUI
- ACCES PIETONAL
- ACCES AUTO
- PROFIL STRADAL

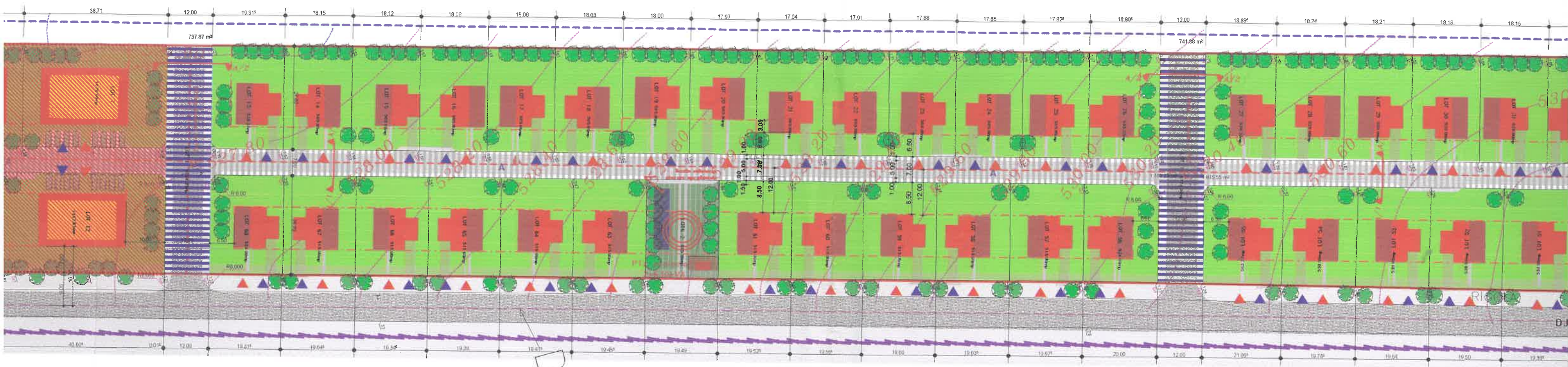


nr cad	nr top	suprafata	Categoria de folosinta	descrierea imobilului	cota parte procentuala	cota parte metri	observatii
2559		6987.12	drum	LOT 1			si au cedat 262.73 si DP1675.53
2560		1111.51	arabil intravilan	LOT 2	2.68	142.35	990.0mp
2561		1070.00	arabil intravilan	LOT 3	2.59	137.57	
2562		1070.00	arabil intravilan	LOT 4	2.59	137.57	
2563		1070.00	arabil intravilan	LOT 5	2.59	137.57	
2564		1070.00	arabil intravilan	LOT 6	2.59	137.57	
2565		1070.00	arabil intravilan	LOT 7	2.59	137.57	
2566		1170.00	arabil intravilan	LOT 8	2.83	137.57	
2567		1170.00	arabil intravilan	LOT 9	2.83	137.57	
2568		1170.00	arabil intravilan	LOT 10	2.83	137.57	
2569		1170.00	arabil intravilan	LOT 11	2.83	137.57	
2570		1167.87	arabil intravilan	LOT 12	2.83	137.57	
2571		535.37	arabil intravilan	LOT 13	1.29	68.52	
2572		505.00	arabil intravilan	LOT 14	1.22	64.80	
2573		505.00	arabil intravilan	LOT 15	1.22	64.80	
2574		505.00	arabil intravilan	LOT 16	1.22	64.80	
2575		505.00	arabil intravilan	LOT 17	1.22	64.80	
2576		505.00	arabil intravilan	LOT 18	1.22	64.80	
2577		505.00	arabil intravilan	LOT 19	1.22	64.80	
2578		505.00	arabil intravilan	LOT 20	1.22	64.80	
2579		505.00	arabil intravilan	LOT 21	1.22	64.80	
2580		505.00	arabil intravilan	LOT 22	1.22	64.80	
2581		505.00	arabil intravilan	LOT 23	1.22	64.80	

nr cad	nr top	su
2582		50
2583		50
2584		53
2585		53
2586		52
2587		52
2588		52
2589		52
2590		52
2591		52
2592		52
2593		52
2594		52
2595		52
2596		52
2597		52
2598		52
2599		53
2600		56
2601		53
2602		53
2603		53
2604		53

NR. CAD. A677/15 NR. TOP 1626/2

PLAN DE AMPLASAM
A BUNULUI
SCARA 1:1000



nr cad	nr top	suprafata	categoria de folosinta	descrierea imobilului	cota parte procentuala	cota parte metri	observatii
2559		6987.12	drum	LOT 1			s au cedat 262.73 si DP1675.53
2560		1111.51	arabil intravilan	LOT 2	2.68	142.35	990.0mp
2561		1070.00	arabil intravilan	LOT 3	2.59	137.57	
2562		1070.00	arabil intravilan	LOT 4	2.59	137.57	
2563		1070.00	arabil intravilan	LOT 5	2.59	137.57	
2564		1070.00	arabil intravilan	LOT 6	2.59	137.57	
2565		1070.00	arabil intravilan	LOT 7	2.59	137.57	
2566		1170.00	arabil intravilan	LOT 8	2.83	137.57	
2567		1170.00	arabil intravilan	LOT 9	2.83	137.57	
2568		1170.00	arabil intravilan	LOT 10	2.83	137.57	
2569		1170.00	arabil intravilan	LOT 11	2.83	137.57	
2570		1167.87	arabil intravilan	LOT 12	2.83	137.57	
2571		535.37	arabil intravilan	LOT 13	1.29	68.52	
2572		505.00	arabil intravilan	LOT 14	1.22	64.80	
2573		505.00	arabil intravilan	LOT 15	1.22	64.80	
2574		505.00	arabil intravilan	LOT 16	1.22	64.80	
2575		505.00	arabil intravilan	LOT 17	1.22	64.80	
2576		505.00	arabil intravilan	LOT 18	1.22	64.80	
2577		505.00	arabil intravilan	LOT 19	1.22	64.80	
2578		505.00	arabil intravilan	LOT 20	1.22	64.80	
2579		505.00	arabil intravilan	LOT 21	1.22	64.80	
2580		505.00	arabil intravilan	LOT 22	1.22	64.80	
2581		505.00	arabil intravilan	LOT 23	1.22	64.80	

nr cad	nr top	suprafata	categoria de folosinta	descrierea imobilului	cota parte procentuala	cota parte metri	observatii
2582		505.00	arabil intravilan	LOT 24	1.22	64.80	
2583		505.00	arabil intravilan	LOT 25	1.22	64.80	
2584		535.37	arabil intravilan	LOT 26	1.29	68.51	
2585		536.33	arabil intravilan	LOT 27	1.30	69.05	
2586		520.00	arabil intravilan	LOT 28	1.26	66.92	
2587		520.00	arabil intravilan	LOT 29	1.26	66.92	
2588		520.00	arabil intravilan	LOT 30	1.26	66.92	
2589		520.00	arabil intravilan	LOT 31	1.26	66.92	
2590		520.00	arabil intravilan	LOT 32	1.26	66.92	
2591		520.00	arabil intravilan	LOT 33	1.26	66.92	
2592		520.00	arabil intravilan	LOT 34	1.26	66.92	
2593		520.00	arabil intravilan	LOT 35	1.26	66.92	
2594		520.00	arabil intravilan	LOT 36	1.26	66.92	
2595		520.00	arabil intravilan	LOT 37	1.26	66.92	
2596		520.00	arabil intravilan	LOT 38	1.26	66.92	
2597		520.00	arabil intravilan	LOT 39	1.26	66.92	
2598		520.00	arabil intravilan	LOT 40	1.26	66.92	
2599		536.33	arabil intravilan	LOT 41	1.30	69.05	446.95
2600		563.27	arabil intravilan	LOT 42	1.36	72.23	473.25
2601		530.00	arabil intravilan	LOT 43	1.28	67.98	
2602		530.00	arabil intravilan	LOT 44	1.28	67.98	
2603		530.00	arabil intravilan	LOT 45	1.28	67.98	
2604		530.00	arabil intravilan	LOT 46	1.28	67.98	

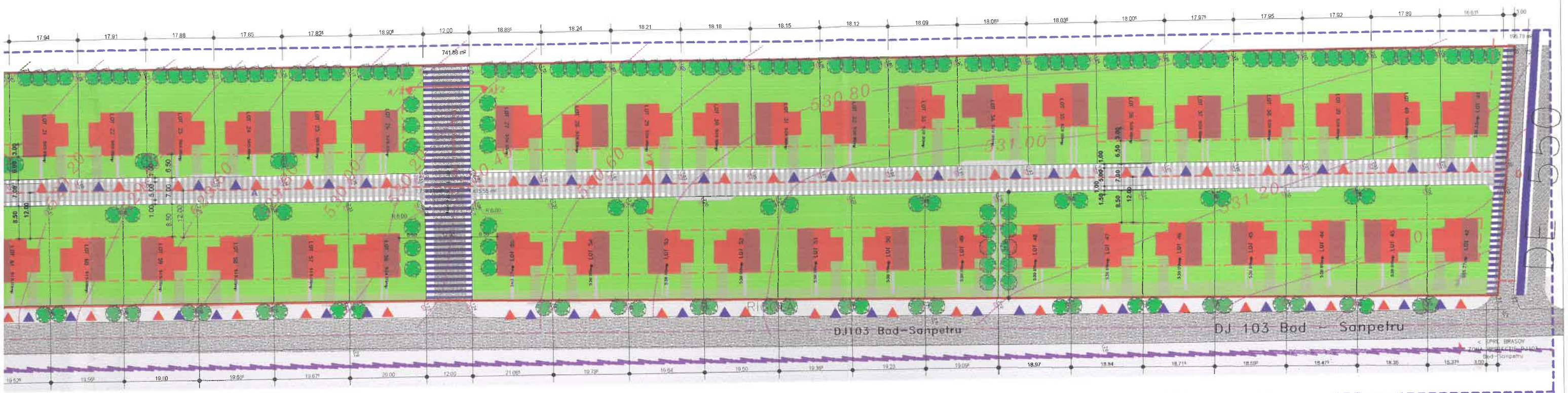
nr cad	nr top	suprafata	categoria de folosinta	descrierea imobilului	cota parte procentuala	cota parte metri	observatii
2605		530.00	arabil intravilan	LOT 47	1.28	67.98	
2606		530.00	arabil intravilan	LOT 48	1.28	67.98	488.225
2607		530.00	arabil intravilan	LOT 49	1.28	67.98	488.225
2608		530.00	arabil intravilan	LOT 50	1.28	67.98	
2609		530.00	arabil intravilan	LOT 51	1.28	67.98	
2610		530.00	arabil intravilan	LOT 52	1.28	67.98	
2611		530.00	arabil intravilan	LOT 53	1.28	67.98	
2612		530.00	arabil intravilan	LOT 54	1.28	67.98	
2613		563.27	arabil intravilan	LOT 55	1.36	72.23	
2614		524.00	arabil intravilan	LOT 56	1.27	67.45	
2615		515.00	arabil intravilan	LOT 57	1.24	65.86	
2616		515.00	arabil intravilan	LOT 58	1.24	65.86	
2617		515.00	arabil intravilan	LOT 59	1.24	65.86	
2618		515.00	arabil intravilan	LOT 60	1.24	65.86	
2619		515.00	arabil intravilan	LOT 61	1.24	65.86	
2620		515.00	arabil intravilan	LOT 62	1.24	65.86	
2621		515.00	arabil intravilan	LOT 63	1.24	65.86	
2622		515.00	arabil intravilan	LOT 64	1.24	65.86	
2623		515.00	arabil intravilan	LOT 65	1.24	65.86	
2624		515.00	arabil intravilan	LOT 66	1.24	65.86	
2625		515.00	arabil intravilan	LOT 67	1.24	65.86	
2626		524.00	arabil intravilan	LOT 68	1.27	67.45	
TOTAL		48.200,00mp			100	5311.59	

Nr. Crt
1
2
3
4

Coordonatele plane rezultate in urma masuratorilor sunt determinate in sistemul Proiectia Sereografica 70" si cotele sunt date in sistemul de referinta "Marea Neagra 1975"

677/15
626/2

PLAN DE AMPLASAMENT SI DELIMITARE
A BUNULUI IMOBIL
SCARA 1:1000



nr cad	nr top	suprafata	categoria de folosinta	descrierea imobilului	cota parte procentuala	cota parte metri	observatii
2605		530.00	arabil intravilan	LOT 24	1.22	64.80	
2606		530.00	arabil intravilan	LOT 25	1.22	64.80	
2607		530.00	arabil intravilan	LOT 26	1.29	68.51	
2608		530.00	arabil intravilan	LOT 27	1.30	69.05	
2609		530.00	arabil intravilan	LOT 28	1.26	66.92	
2610		530.00	arabil intravilan	LOT 29	1.26	66.92	
2611		530.00	arabil intravilan	LOT 30	1.26	66.92	
2612		530.00	arabil intravilan	LOT 31	1.26	66.92	
2613		563.27	arabil intravilan	LOT 32	1.26	66.92	
2614		524.00	arabil intravilan	LOT 33	1.26	66.92	
2615		515.00	arabil intravilan	LOT 34	1.26	66.92	
2616		515.00	arabil intravilan	LOT 35	1.26	66.92	
2617		515.00	arabil intravilan	LOT 36	1.26	66.92	
2618		515.00	arabil intravilan	LOT 37	1.26	66.92	
2619		515.00	arabil intravilan	LOT 38	1.26	66.92	
2620		515.00	arabil intravilan	LOT 39	1.26	66.92	
2621		515.00	arabil intravilan	LOT 40	1.26	66.92	
2622		515.00	arabil intravilan	LOT 41	1.30	69.05	446.95
2623		515.00	arabil intravilan	LOT 42	1.36	72.23	473.25
2624		515.00	arabil intravilan	LOT 43	1.28	67.98	
2625		515.00	arabil intravilan	LOT 44	1.28	67.98	
2626		524.00	arabil intravilan	LOT 45	1.28	67.98	
TOTAL		48.200,00mp		LOT 46	1.28	67.98	

nr cad	nr top	suprafata	categoria de folosinta	descrierea imobilului	cota parte procentuala	cota parte metri	observatii
2605		530.00	arabil intravilan	LOT 47	1.28	67.98	
2606		530.00	arabil intravilan	LOT 48	1.28	67.98	488.225
2607		530.00	arabil intravilan	LOT 49	1.28	67.98	488.225
2608		530.00	arabil intravilan	LOT 50	1.28	67.98	
2609		530.00	arabil intravilan	LOT 51	1.28	67.98	
2610		530.00	arabil intravilan	LOT 52	1.28	67.98	
2611		530.00	arabil intravilan	LOT 53	1.28	67.98	
2612		530.00	arabil intravilan	LOT 54	1.28	67.98	
2613		563.27	arabil intravilan	LOT 55	1.36	72.23	
2614		524.00	arabil intravilan	LOT 56	1.27	67.45	
2615		515.00	arabil intravilan	LOT 57	1.24	65.86	
2616		515.00	arabil intravilan	LOT 58	1.24	65.86	
2617		515.00	arabil intravilan	LOT 59	1.24	65.86	
2618		515.00	arabil intravilan	LOT 60	1.24	65.86	
2619		515.00	arabil intravilan	LOT 61	1.24	65.86	
2620		515.00	arabil intravilan	LOT 62	1.24	65.86	
2621		515.00	arabil intravilan	LOT 63	1.24	65.86	
2622		515.00	arabil intravilan	LOT 64	1.24	65.86	
2623		515.00	arabil intravilan	LOT 65	1.24	65.86	
2624		515.00	arabil intravilan	LOT 66	1.24	65.86	
2625		515.00	arabil intravilan	LOT 67	1.24	65.86	
2626		524.00	arabil intravilan	LOT 68	1.27	67.45	
TOTAL		48.200,00mp			100	5311.59	

Coordonatele plane rezultate in urma masuratorilor sunt determinate in sistemul Proiectia Sereografica 70" si cotele sunt date in sistemul de referinta "Marea Neagra 1975"

BILANT TERITORIAL

Nr. Crit.	ZONE FUNCTIONALE	EXISTENT		PROPOS	
		mp	%	mp	%
1	Constructii	0	0	13100.0	31.9
2	Circulatii carosabile si pietonale	0	0	6987.12	14.5
3	Zona spatii verzi amenajate/sp.joaca copii parcaje	0	0	28112.88	53.6
4	Teren arabil	48200.0	100	0	0
	TOTAL	48200.0	100	48200.0	100



REGIM DE INALTIME PROPOS S+P+2E+M
REGIM MAXIM CF PUZ S+P+2E+M

LOCUINTE COLECTIVE SI DOTARI

POT propus = 40%
CUT propus = 1.4
POT max cf PUZ = 60%
CUT max cf PUZ = 1.2



REGIM DE INALTIME PROPOS S+P+1E+M
REGIM MAXIM CF PUZ S+P+2E+M

LOCUINTE IZOLATE

POT propus = 40%
CUT propus = 1,2
POT max propus cf PUZ = 60%
CUT max propus cf PUZ = 1,2

verificator /expert		semnatura	scara	beneficiar: Oлару Neculai si Oлару Melania adresa: str. FN, BOD, jud. Brasov nr cad 2560-2626, extr cf 6589 Bod	proiect nr: 33/07.2008
specificatie			1/1000		faza PUZ
sef proiect	arh. Ababei Denis				
proiectat	arh. Ababei Denis		data		
desenat	arh. Ababei Denis		10.07.2008		
				titlu plansa	REGLEMENTARI URBANISTICE
					A-03